

SMITH LANE

a community podcast with OnPlace



GUEST INFO

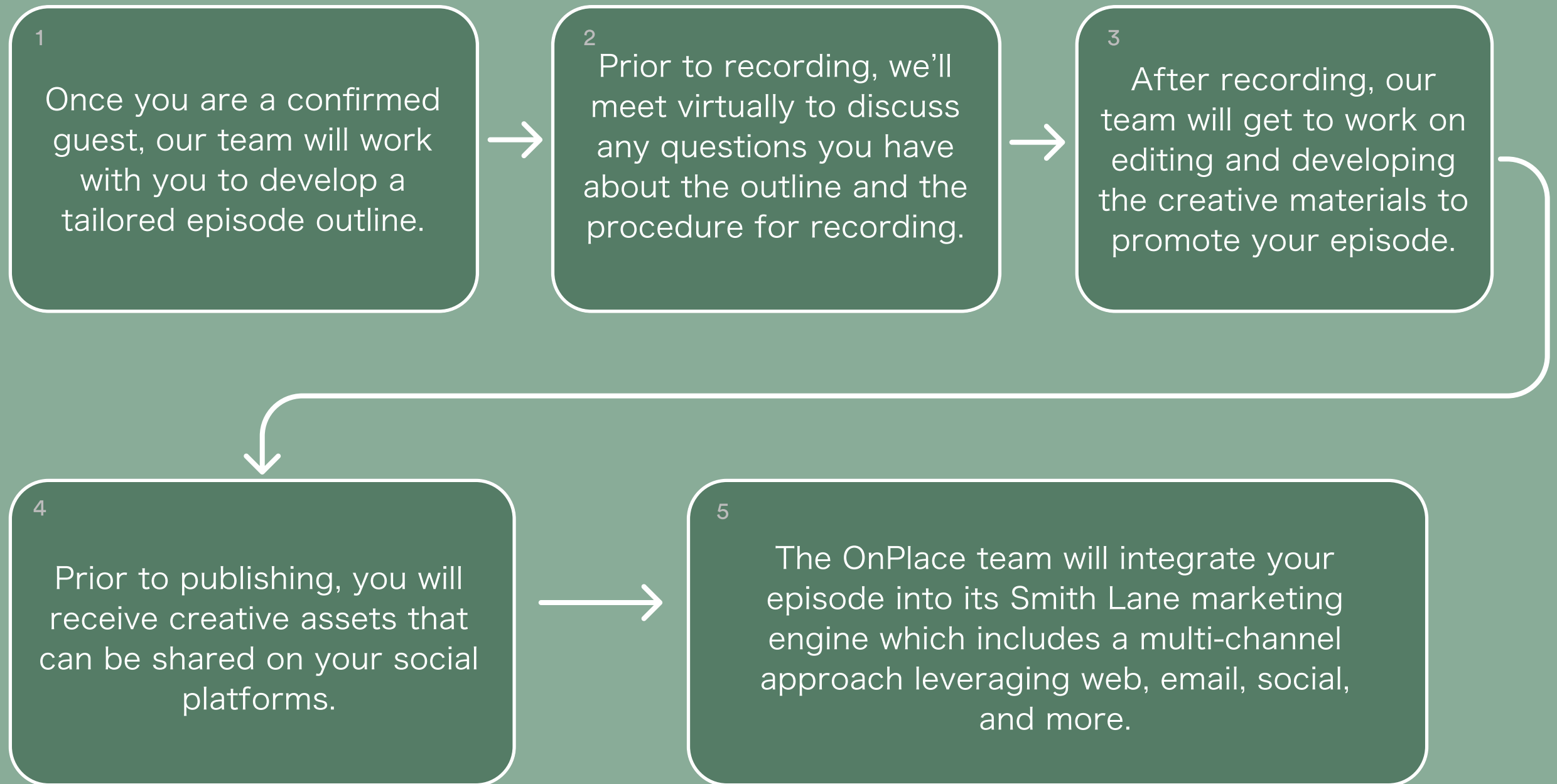
Everyone has a “Smith Lane”

My community began on Smith Lane, the dirt road I grew up on, in a small southern town in Alabama. My first memories of community are neighbors helping neighbors. My community certainly helped shape who I am today.

I am so intrigued by community - what it means, how it's created, how it shapes us - and I am on a journey to discover more, to learn, and to grow.

Through stories of my guests and my own, we'll attempt to discover more about what makes a place a community and hopefully have a little fun along the way.

How Things Work



[Become a Guest](#)

Our Host

Monaca Smith Onstad

Monaca is a nationally recognized community relations and lifestyle executive with a passion for building community in the residential and commercial real estate markets.

Monaca is the founder of OnPlace, a placemaking firm dedicated to creating true, authentic communities throughout the United States for builders and master planned community developers.



[Connect with Monaca](#)



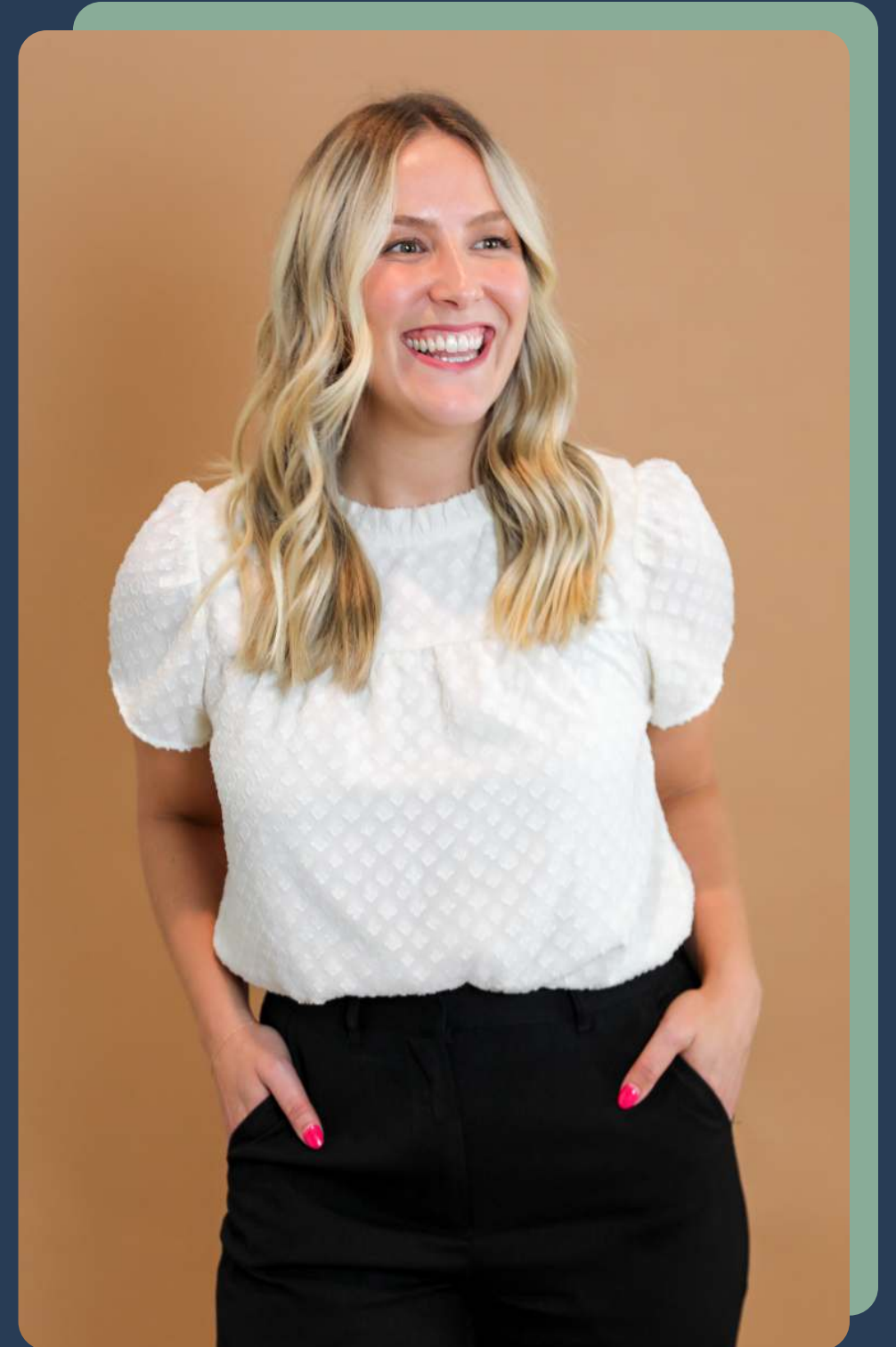
With co-host

Callie Friedman

“When I think about my Smith Lane, it's hard to pinpoint just one. I've been lucky to live in many amazing places, all of which shaped a piece of who I am today. Whether it be growing up in a master planned community in the Bay Area, or moving to Atlanta and pursuing my dreams of becoming an Ironman triathlete - finding my personal "Smith Lane" within these communities shaped me into who I am today.”



[Connect with Callie](#)



SMITH LANE

a community podcast with OnPlace



Coming Soon On



[Website](#) | [Instagram](#) | [Linkedin](#)